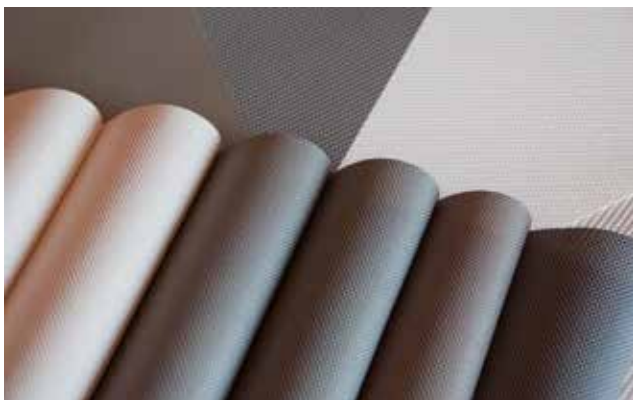




 **Sauleda** Office

Screen Out



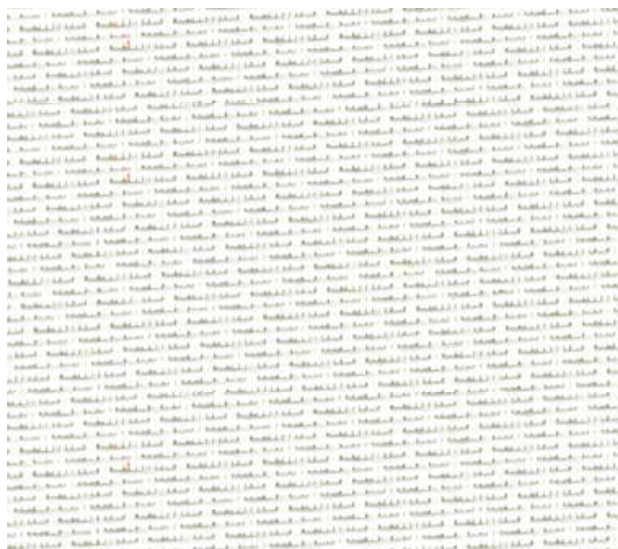


Screen Out N



GRANATE 7817

Screen Out S

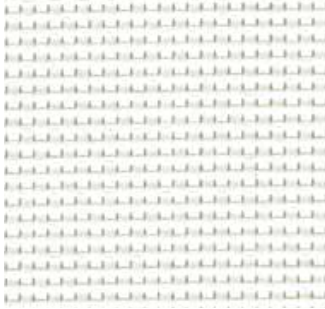


Características técnicas • Technical characteristics • Caractéristiques techniques • Technische Date

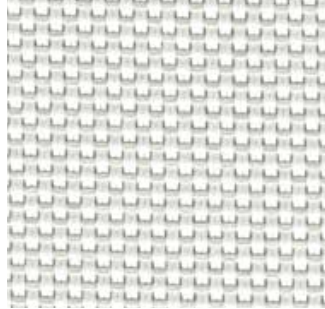
		Screen Out S	Screen Out N
Peso • Weight • Poids • Gewicht		635 gr/m ²	570 gr/m ²
Ancho • Width • Largeur • Breite		260 cm	260 cm
Espesor • Thickness • Épaisseur • Dicke		1,0 mm	0,9 mm
Resistencia tracción • Tensile strength	Urdimbre • Warp • Chaîne • Kette	250 daN/5cm	250 daN/5cm
Résistance à la rupture • Höchstzugkraft	Trama • Weft • Trame • Schuss	300 daN/5cm	250 daN/5cm
Resistencia desgarre • Tear strength	Urdimbre • Warp • Chaîne • Kette	30 daN	25 daN
Résistance à la déchirure • Weiterreissfestigkeit	Trama • Weft • Trame • Schuss	30 daN	25 daN
Porosidad • Porosity • Porosité • Porosität		5	5
Ignífugo • Fireproof • Épreuve du feu • Feuerfest		M2/B1	M2/B1
Longitud de las piezas • Roll length • Longueur des pièces • Rollenlänge		40 ml	40 ml



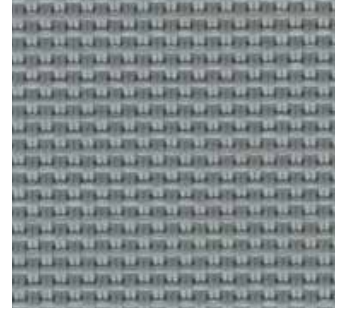
Screen Out N



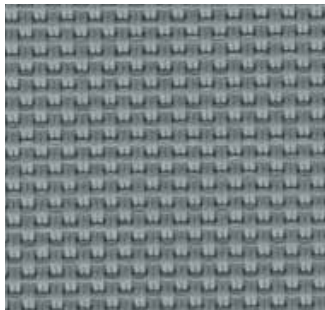
BLANCO 7810



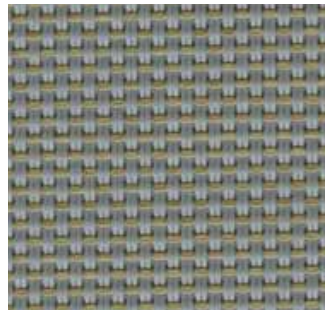
MARFIL 7811



MINERAL 7812



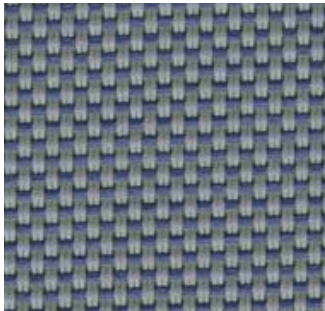
BASALTO 7813



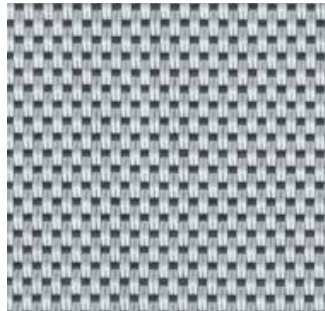
BRONCE 7814



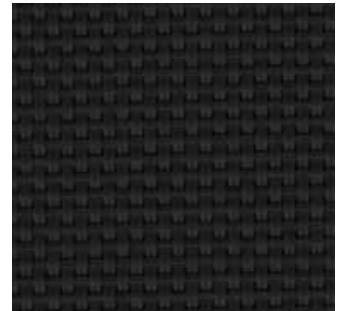
COBRE 7815



BRISA 7816



GRAFITO 7819



NEGRO 7818

Screen Out S



BLANCO 7820



MARFIL 7821



BASALTO 7822



SAULEDA, S.A.
Travessera de les Corts, 102
08028 Barcelona (Spain)
Tel. +34 933 397 150
Fax +34 934 111 290
sauleda@sauleda.com
www.sauleda.com